

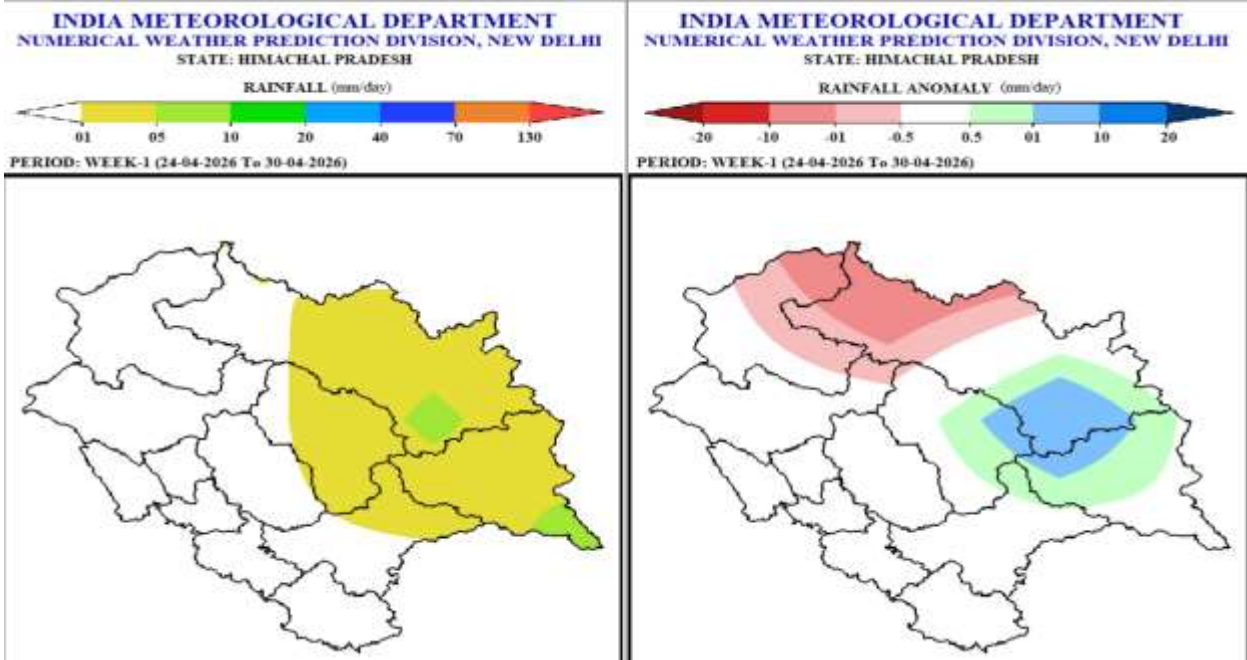
Extended Range Weather Forecast

Date: - 23.04.2026

Weather Forecast and Warning for two weeks w.e.f. 24th April, 2026

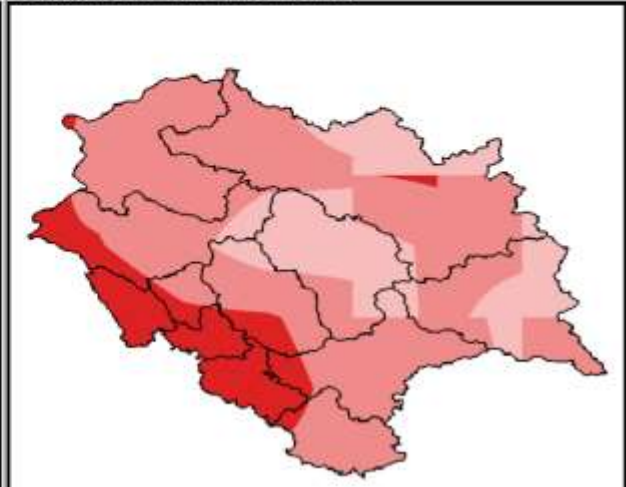
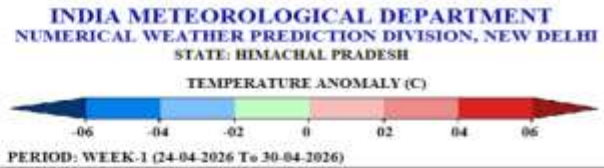
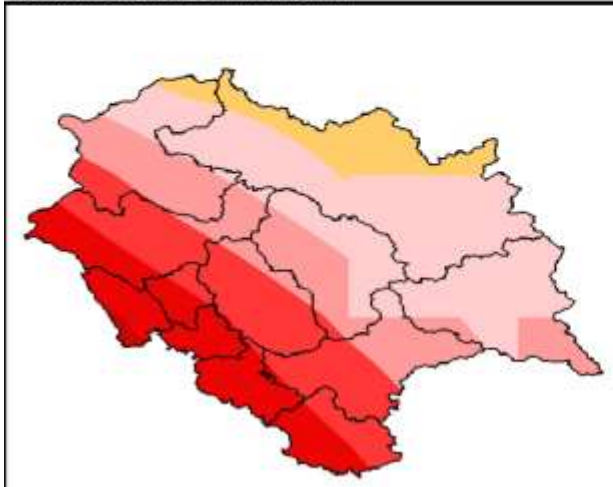
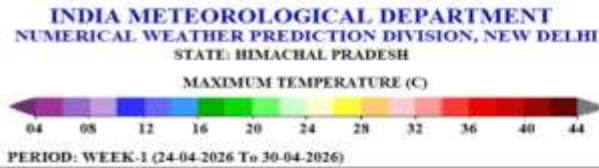
Week 1 (24th April to 30th April 2026)

Rainfall



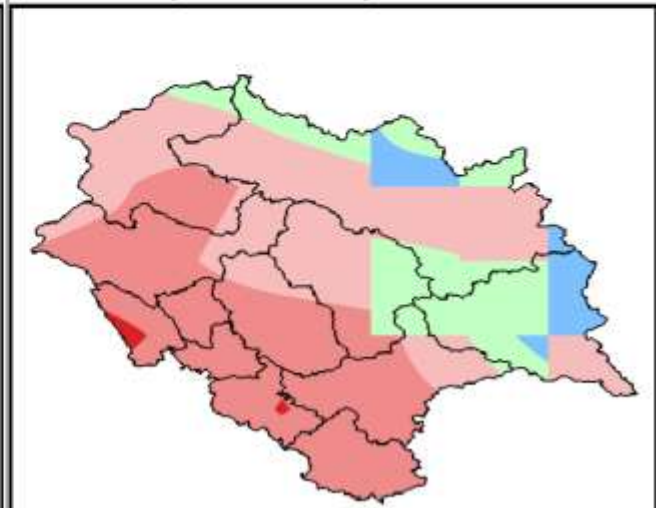
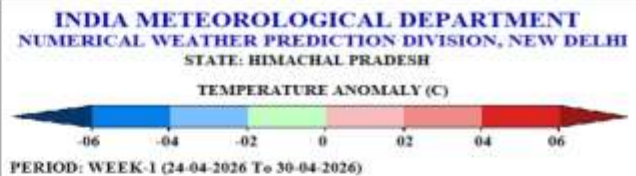
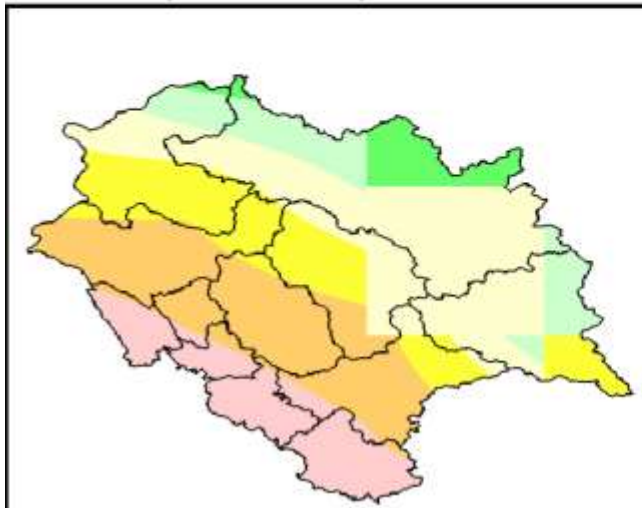
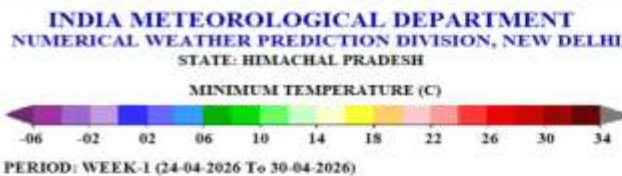
- Light rain/snow likely at isolated places over the state on 24th, 26th & 27th April 2026. Light to moderate rain/snow likely at few places over the state on 25th, 28th & 29th April 2026. Dry weather likely over the state for the remaining days of the week.
- Rainfall anomaly very likely to be normal over many parts of the state; below normal for some parts of Chamba & Lahaul-Spiti districts and above normal for some parts of Kinnaur, Kullu & Lahaul-Spiti districts in the week 1.

Maximum Temperatures



- Maximum Temperatures very likely to be in the range of 12-18°C over most parts of the high hills; in the range of 20-34°C over most parts of the mid hills and in the range of 24-36°C over most parts of the low hills/plains during many days of the week 1.
- Maximum Temperatures very likely to be normal to above normal for many parts of the mid & high hills of the state and above to appreciable above normal for many parts of low hills/ plains of the state and also for some parts of Chamba & Lahaul-Spiti districts in the week 1.

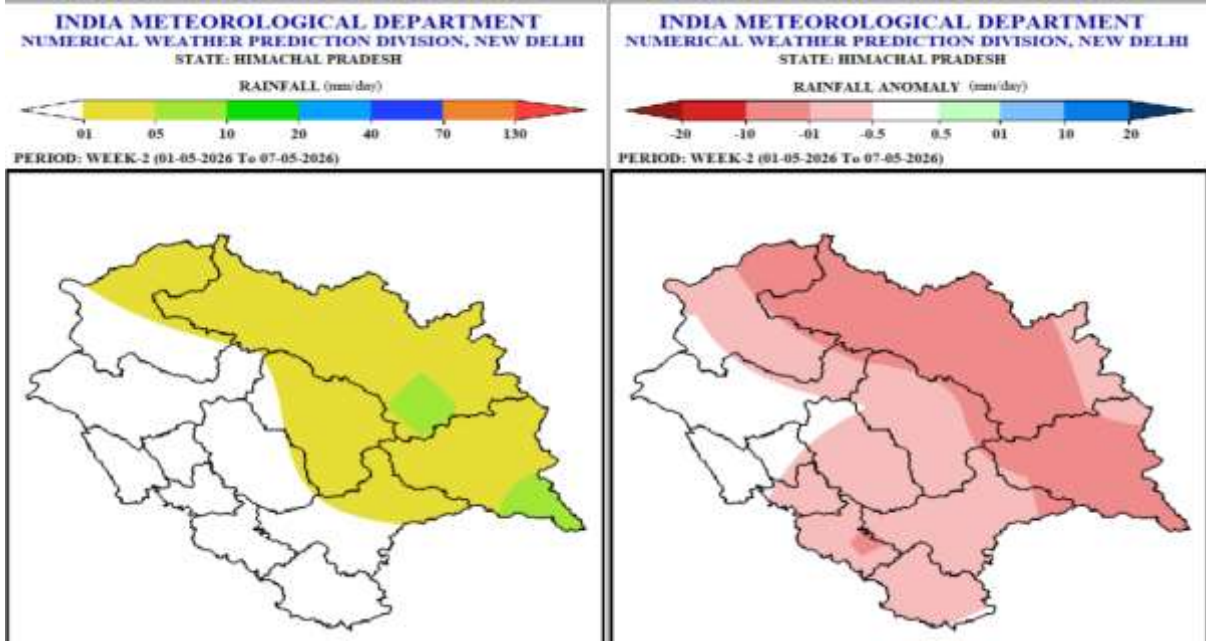
Minimum Temperatures



- Minimum Temperatures very likely to be in the range of 14-20°C over most parts of the low hills/plains; in the range of 10-18 °C over most parts of the mid hills and in the range of -02 to 08 °C over most parts of the high hills during many days of the week 1.
- Minimum Temperatures very likely to be above normal over many parts of the low hills/ plains & mid hills of the state; normal for many parts of the high & adjoining mid hills of the state; below normal for parts of Kinnaur & Lahaul-Spiti districts and appreciable above normal for some parts of Una & Solan districts in the week 1.

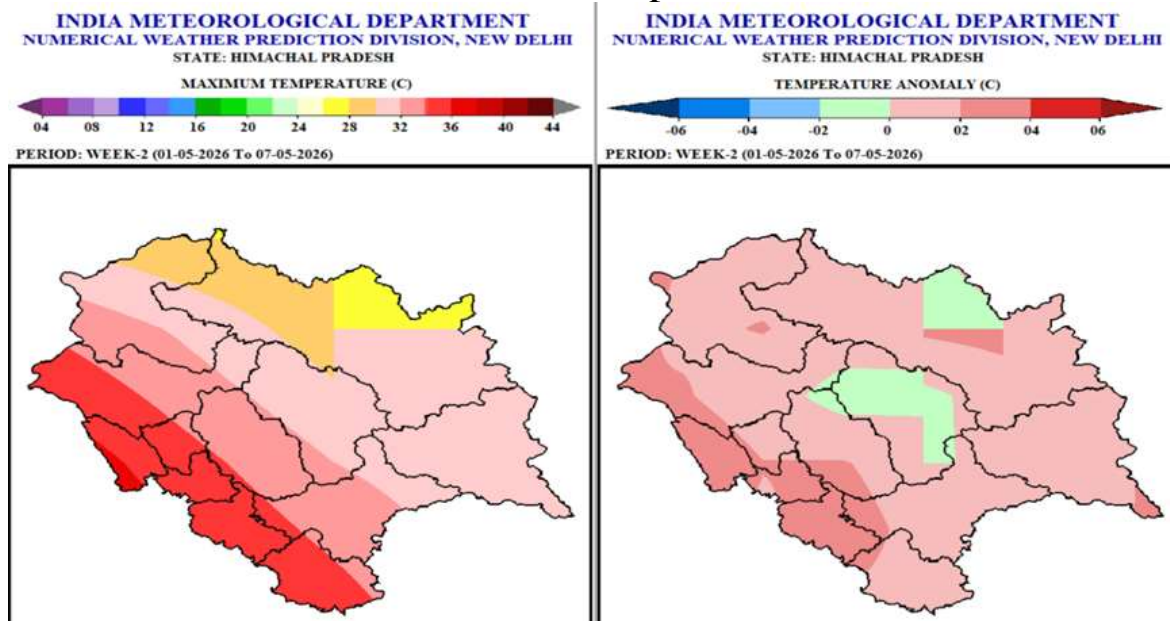
Week 2 (01st May to 07th May 2026)

Rainfall



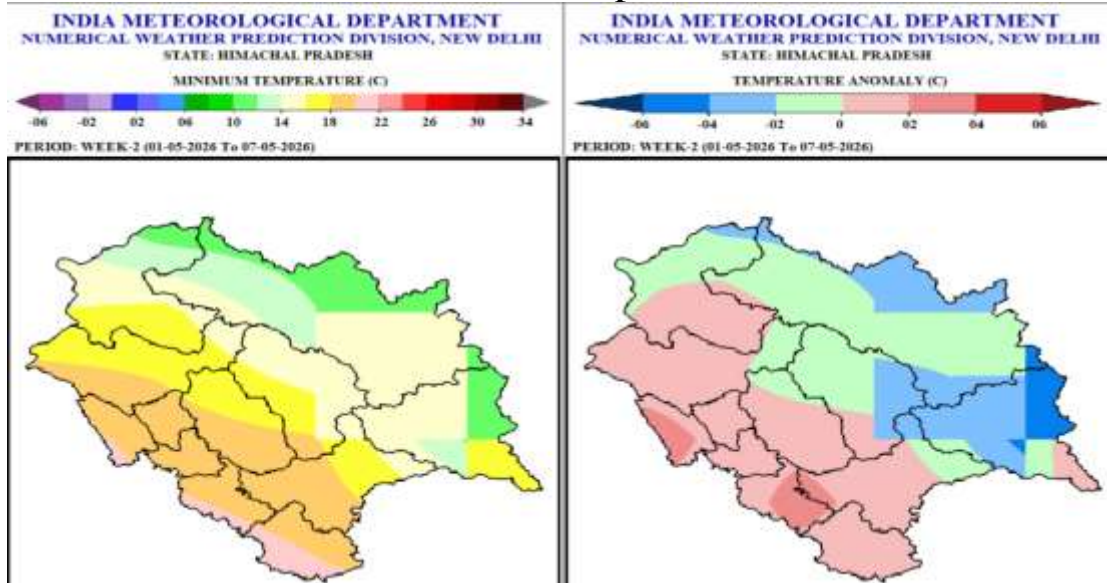
- Light rain/snow likely over few parts of the high & mid hills and over isolated parts of low hills/plains of the state during some days of the week 2.
- Rainfall anomaly likely to be below normal over many parts of the state and normal for parts of Una, Kangra, Chamba, Mandi & Hamirpur districts in the week 2.

Maximum Temperatures



- Maximum Temperatures likely to be in the range of 08-20°C over many parts of the high hills; in the range of 20-32°C over many parts of the mid hills and in the range of 26-36°C over many parts of the low hills/plains during many days of the week 2.
- Maximum Temperatures likely to be normal for many parts of high & mid hills of the state and normal to above normal over many parts of the low hills/plains of the state and for some parts of Chamba, Kinnaur & Lahaul-Spiti districts in the week 2.

Minimum Temperatures



- Minimum Temperatures are likely to be in the range of 12-20°C over many parts of the low hills/plains; in the range of 10-18°C over many parts of the mid hills and in the range of -02 to 06 °C over many parts of the high hills during many days of the week 2.
- Minimum Temperatures likely to be normal over many parts of the state; above normal over some parts of Una, Solan & Shimla districts; below normal for some parts of Kullu district and appreciable below normal for some parts of Kinnaur & Lahaul-Spiti districts in the week 2.

Outlook for next 2 weeks

Week	Max. Temp.	Min. Temp.	Rainfall Anomaly
Week 3 08th May to 14th May	Low hills/plains & mid hills: Above Normal; High hills & adjoining mid hills: Normal; Above Normal for some parts of Chamba, Kinnaur & Lahaul-Spiti districts; Appreciable Above Normal for some parts of Una district	Normal; Above Normal for Una, Bilaspur & Solan districts and some parts of Hamirpur, Mandi, Shimla, Kinnaur & Sirmaur districts	Below Normal; Normal for parts of Kangra & Una districts
Week 4 15th May to 21st May	Normal to Above Normal; Appreciable Above Normal for Una district and some parts of Kinnaur & Solan districts	Low hills/plains: Above Normal; High hills & mid hills: Normal; Above Normal for some parts of Kinnaur district; Below Normal for some parts of Kullu & Lahaul-Spiti districts	Below Normal; Normal for parts of Kangra & Una districts

REGION	AREAS/DISTRICTS COVERED
HIGH HILLS	LAHAUL & SPITI, KINNAUR, CHAMBA, UPPER PARTS OF KULLU AND MANDI DISTRICTS
MIDDLE HILLS	SHIMLA, MANDI, KULLU, SOME PARTS OF CHAMBA(SIHUNTA, CHOWARI AND CHAMBA), MOST PARTS OF SOLAN AND SIRMAUR DISTRICTS
LOW HILLS/PLAINS	UNA, BILASPUR, HAMIRPUR, SOME PARTS OF KANGRA (NURPUR, JWALA & DEHRA), SOLAN(NALAGARH, BADDI, ARKI & KUNIHAR) AND SIRMAUR (NAHAN & PAONTA SAHIB) DISTRICTS

Regards
Met Centre Shimla

For latest Weather Bulletin and warnings kindly visit following links

Website:

Facebook: <https://www.facebook.com/profile.php?id=100018411811087>

Twitter: <https://twitter.com/himachalmausam>

IG: www.instagram.com/metcentresml/